

HAWAI'I WOMEN LAWYERS NEWSLETTER

February 1998

In This Issue...

HWL 1998 Legislative Retreat

To set HWL's list of targeted legislation for the current session.

Legal Aid Society of Hawai'i

Seeking volunteers to augment staffing at Bankruptcy clinics.

Profiles on Our Award Winners

What they have accomplished. Why they were chosen.

Program on Justice Reform

Peter Carlisle to speak on legal reform at Luncheon Program

Is this Goodbye?

Last chance for non-members to continue receiving our newsletter.

Calendar of Events

Monday, February 23rd noon
DeRussy Hall in the Hale Koa Hotel
Criminal Justice Reform Program
featuring Peter Carlisle. Sponsored
by Professional Women's Net-
work. \$21 Reservations required.
(See page 3 for details)

Friday, February 27th
3:30 p.m. to 5:00 p.m. "Managing
Your Office" Practice Management
Workshop presented by HBSA.
Helpful and practical tips on run-
ning your business or firm effec-
tively and efficiently. HSBA Con-
ference Room. No charge. To
make reservations call 537-1868.

Saturday, February 28th
10:00 a.m. HWL 1998 Legislative
Meeting (See page 3 for details)

HWL Awards Reception Set for March 20th

Each year Hawai'i Women Lawyers honors individuals who we feel merit special recognition. Past winners have included Susan Oki Mollway, Chief Justice Herman T. F. Lum, Senator Mary George, Judge Marie Milks, Representative Patsy T. Mink and Judy M. Weightman.

On February 1st, HWL's Board of Directors has released to the media the names of this year's awards honorees. They are:

Outstanding Lawyer of the Year	Beatice "Beadie" Dawson, Esq.
Distinguished Service Award	Dorothy "Dolly" Ching
Lifetime Achievement Award	Hon. Evelyn Lance
President's Award	Gladys Brandt

Meet the Honorees

Awards will be presented at a reception at the Plaza Club in downtown Honolulu on Friday, March 20th from 5:00 p.m. to 7:00 p.m. Heavy pupus will be served. Live music will be provided by Puamana.

Please join us. HWL members and their families need pay only \$15 per person. Non-members will be charged \$20 per person. Special validated parking on the premises will be available at a nominal charge.

To make a reservation, please send your check made out to "Hawai'i Women Lawyers" to HWL Organization Headquarters, 76 North King Street, Suite 206, Honolulu, HI 96817.

Bankruptcy Clinic Volunteers Needed by LASH

HWL is looking for volunteers to assist the Legal Aid Society of Hawai'i with Chapter 7 Bankruptcy Clinics. Gabrielle Hammond of Legal Aid reports that they have lost approximately 45% of their government funding over the past four years. Augmenting the LASH staff with clinic volunteers is the only way they can continue to provide legal services to the poor. Please call Rosemary Mcshane at 523-4878 to volunteer.

HWLF Opens Nominations for Public Service Award

The Hawai'i Women's Legal Foundation is now accepting nominations for the Rhoda V. Lewis Award. This \$500 honorarium and certificate is offered each year to a woman lawyer who has shown an extraordinary commitment to public service. The award was established by Esther & Clifford Arinaga. Please fax your nomination to Mary Houghton at 396-9162. If you have further questions, you can call Mary at 396-8506.

PRO(fil'e)

Professor Hazel Beh

HWL Board member Hazel Beh is now an assistant professor of law at her alma mater, William S. Richardson School of Law at University of Hawai'i. Prior to that she did appellate work as Deputy Corporation Counsel for the City and County of Honolulu. She is married to attorney Walter Beh and has a son in college and another in high school. We recently caught Hazel between classes and asked her a couple of questions:

HLW: How long have you been teaching at Richardson?

Beh: "I've been here about three years now. Right now I'm teaching Law Contracts and a course called Advanced Torts & Insurance Law."

HWL: Did you always want to be a lawyer?

Beh: "Yes. But I didn't do it. Instead I became a social worker."

HWL: Why not a lawyer?

Beh: I had a lot of anxiety about law school. My husband is an attorney and his colleagues were always telling war stories about how scary and tough law school was. I guess I was intimidated. But after thirteen years of social work with the elderly, I decided that I could make more of a difference, effect more change, and have more control over my career if I became a lawyer."

HWL: Did the war stories turn out to be true?

Beh: "It was challenging but not terrible. The first year was the hardest. I suffered a tremendous lack of confidence made worse by spending the whole first semester without any grades, without any feedback, without anything to gauge my progress. But after that, it was terrific. In terms of learning, it was the most exciting time of my life. I learned something new every day.

HWL: Was your husband supportive?

Beh: "Very supportive. He had gone to law school at the University of Pennsylvania twenty years before. Suddenly we had more in common. We could talk about Hadley v. Baxendale and twenty years and 5,000 miles disappeared, and we were speaking the same language."

HWL: When did you find time to study while raising two sons?

Beh: "They were both on the swim team and had to practice for two hours every day. So I would sit in the car and study while I waited for them. It actually worked out really well."

HWL: Was it difficult being a "non traditional" student?

Beh: "In some respects it was easier. My study partners were always trying to work their studying around socializing and partying. I never had to deal with that pressure. My social life was waiting for me at home."

HWL: Any romantic plans for Valentine's Day?

Beh: "Well the day after is my 23rd wedding anniversary."

HWL: So you and your husband planned your wedding around the Valentine's Day holiday?

Beh: "No, actually we planned it around Presidents' Day. We wanted a three-day weekend."

Chop Sui Generis

Anne Clarkin, Director at Missing Child Center of Hawai'i is still home in a wheelchair, recovering from a triple fracture in her right leg and ankle. "In early January, I did a triple gainer off my steps. Unfortunately I did not make a clean entry and style points were deducted." (Obviously, Clarkin is spending way too much time watching the Olympics on TV.)

On the plus side, her lap top is hooked into her office data bank, so that even though she is laid up, she has still managed (with the help of the HPD) to recover several kids. Anne invites her friends to E-mail her at: himissingchildren@compuserve.com

The office of the Maui Public Defender moved "mostly overnight," according to office Supervisor and HWL Secretary **Susan L. Arnett**, who spent last weekend trying to figure out how to get 21 filing cabinets into a 10-cabinet filing room. The address, 81 North Market Street in Wailuku, Maui, remains the same. "We just moved downstairs and now have the whole ground floor."

Former Deputy Prosecutor **Judith Schevtchuk** has opened her own practice, specializing in family law and mediation. Away for two years, "freezing in Rhode Island," she is officing with Honolulu attorney **T. Lynne Wasson**, at 735 Bishop Street, Suite 430. Before following her active-duty-Navy-attorney husband to the coastal northeast, Schevtchuk had a solo practice and was an associate with Stirling & Kleintop. A former Navy attorney herself, Judy says she "speaks Navy," and will be accepting cases where that expertise is required. She expects to concentrate, however, on family law, and on cases where it may "cost less to mediate than to litigate." Schevtchuk, who says, "we won't be leaving again," can be reached at 523-3514.

Birthday Greetings to....**Diana Allen**, January 30; **Donna M. Gray**, February 11; **Mary L. Lucasse**, March 2; **Laura Theilen**, March 25.

Congratulations to **Tucker Dacey** at Legal Aid society of Hawai'i on the birth of her daughter Cameron.

HWL Members Invited to Attend February 28th HWL Legislative Meeting

Help Decide HWL 1998 Legislation Policy Agenda

For all HWL members who are interested in becoming informed or involved in HWL's lobbying efforts at this year's Legislature, HWL's Legislative Committee will be holding an information retreat on February 28th, 1998, beginning at 10:00 a.m. in the conference room at Simons & Ichinose in the Oceanview Center, 707 Richards Street, Penthouse One.

As in previous years, HWL is presently surveying the hundreds of bills and resolutions introduced in the Legislature in order to decide which of them deserve HWL's support or opposition this year. Members of the HWL Legislative Committee--president **Susan Ichinose**, vice president/president-elect **Rosemary McShane**, and directors **Magali Sunderland**, **Hazel Beh**, and **Suzanne Terada**--are spearheading HWL's legislative mission in 1998.

HWL's Legislative Committee concentrates its attention on bills affecting:

- (a) the social and educational welfare of women and children in Hawai'i,
- (b) the accessibility of courts to, and the advancement of legal rights of, women and children in Hawai'i, and
- (c) the professional advancement and interests of women lawyers.

For example, the following are a few of the bills upon which HWL has already taken positions and submitted written testimony:

HB 616/SB 2323: HWL Supports; bill amends HRE 412 to conform to FRE 412, which follows the "Rape Shield Law" policy of limiting evidence of the past sexual conduct of the victim of a sexual assault.

HB 2973/SB 2270: HWL Opposes; bill bans all partial-birth abortions and provides penalties.

HB 2343: HWL Opposes; bill that mandates that all pregnant women in the State be tested for HIV.

SB 719: HWL Supports; judicial pay raise bill.

In addition, HWL is tracking the progress of a number of bills in the areas of **domestic abuse, children's rights, civil justice reform, children/teen social and educational programs, and civil rights**. These bills and others will be the subject of discussion at the February 28 information session.

Parking will be available in the building that morning free of charge, from parking level 3 on up. The meeting is presently scheduled to conclude by noon. If you have any questions or would like to attend this important meeting, please call Kay Lorraine at 545-8055 or Susan Ichinose at 536-3255.

Briefs

Congratulations to Stacy E. Uehara for being chosen to participate in the Pew Civic Entrepreneur Initiative. Uehara concentrates her practice in the area of land use, natural resources and administrative law at Dwyer Imanaka Schraff Kudo Meyer and Fujimoto

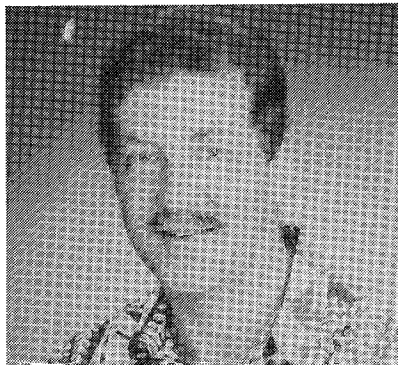
Judging the Culture

Supreme Court Justice **Ruth Bader Ginsberg** went canoeing with the law students while she was in town last week, reports Asst. Dean **Carole Mon Lee**. "She taught them law; they taught her the shaka."

Looking for a paralegal or legal assistant?

Katie McDonald, a recent Ohio transplant, has seven years of experience and is job hunting. She specialized in insurance defense cases at Quandt Giffels & Buck, Cleveland, and can be reached at 625-8961.

Criminal Justice Reform to be Topic at Professional Women's Network Luncheon



Honolulu Prosecuting Attorney Peter Carlisle Scheduled to be Featured Speaker

HWL members and guests are invited to participate in the February 23rd luncheon program on crime in Hawai'i. The program is part of the Professional Women's Network luncheon series and will be held at 12:00 noon in DeRussy Hall at the Hale Koa Hotel. Honolulu's prosecuting attorney, Peter Carlisle, will be the featured speaker, presenting his ideas on "Necessary Changes in Hawai'i's Criminal Justice System."

Honolulu's prosecuting attorney is an outspoken advocate for the reform of Hawai'i's Criminal Justice System. Since taking office he has personally handled several cases, including State v. Kealoha and State v. Steinseifer. He has also been instrumental in opening up many Family Court proceedings to the media and the public, as well as lowering the age that juveniles can be tried as adults for some offenses.

There will be a discussion period with Mr. Carlisle immediately following his remarks. HWL members are welcome to join the discussion with their questions and comments on crime and how to better deal with it.

Reservations are required for confirmed seating and can be made by phoning 533-4800 by noon Friday, February 20th. Cost of the luncheon for non-PWN members is \$21. Parking will be validated for an additional \$1.50 cost.



The Honorable Evelyn B. Lance (Ret.)

Lifetime Achievement Award

Retired Judge Evelyn Lance now serves as a mediator with the Hawai'i Supreme Court Appellate Conference program as well as on the panel of neutrals of Dispute Prevention & Resolution, Inc. She served as a Judge of the Family Court of the First Circuit, State of Hawai'i for twelve years and as a *per diem* judge for three years thereafter. She was considered by the legal community to be a strong but impartial judge with a knack for moving difficult cases along swiftly. Her colleague and close friend Betty Vitousek says, "Evelyn has the ability to find humor in any situation. She is open and honest. I have unlimited respect for her judicial abilities and great affection for her as a person."

Judge Lance was Chairperson of the Governor's Commission on Child Support Enforcement in 1985. She has served on the Boards of the Neighborhood Justice Center and the Friends of the Children's Advocacy Center and has presented at numerous Family Law and ADR education programs sponsored by the Hawai'i Institute for Continuing Legal Education, the American Bar Association, the Neighborhood Justice Center and Hawai'i Lawyers Care. She has chaired and still works with the *Kids First* mandatory parent divorce education program at Family Court and serves on the board of the Hawai'i Justice Foundation. She is a director and immediate Past President of Hawai'i Opera Theater.

Judge Lance plays chamber music (she is an accomplished musician on both piano and harpsichord) and tennis and enjoys her six grandchildren.

Evelyn Lance earned her B.A. degree from Cornell University, a Masters in Music from the University of London and her J.D. from Columbia Law School. She practiced law until her appointment to the bench in 1980.

Congratulations to our Lifetime Achievement Award winner.



Gladys Kamakakuokalani Ainoa Brandt

President's Award

For her years of dedicated work in the preservation of culture, consistent support of legislative equality, and educational trailblazing for women and children, Hawai'i Women Lawyers bestows upon Gladys Brandt its President's Award. The honor is given to an individual who merits special recognition, but is not necessarily a lawyer.

After getting her teaching certificate in 1927, Gladys Brandt went to Kaua'i to eventually become the first woman principal and first woman superintendent of schools in the state of Hawai'i. She opened doors for all women who followed in the field of education. She returned to Honolulu in 1963 to accept the position of Principal at The Kamehameha School for Girls. In 1969 she became High School Division Director for The Kamehameha Schools system.

Between 1983 and 1989, Gladys served on the University of Hawai'i Board of Regents, the last four years as Chairman. Her list of positions on advisory boards, commissions, foundations, boards of Governors, executive committees, trusteeships, chairmanships, directorships, etc. fills three typewritten pages (single spaced!).

Since she is now 92 years old, Gladys has cut her community activities back to only nine, including Commissioner for the State Foundation on Culture and the Arts, Advisory Board for Cancer Research Center of Hawai'i, Director of Papa Ola Lokahi, Hawai'i Airports Cultural Advisory Commission, International Woman's Forum, and the Native Hawaiian Historic Preservation Council.

Winona Ruben, who worked with Gladys at Kamehameha Schools, describes her as "an outstanding model for all who followed her; someone who has served as an articulate spokesperson for all the issues that have served to improve Hawai'i in many different ways. She is very much oriented towards young people and their future, consistently speaking out for the underdog while leaving society a better place for those who are yet to come."



Beadie Kanahale Dawson

Woman Lawyer of the Year

HWL has named Beadie Kanahale Dawson as HWL's Woman Lawyer of the Year in recognition of her selfless provision of legal services to a leading segment of Hawai'i's community in 1997.

The legal profession, and the Hawai'i State Bar Association ask lawyers to undertake *pro bono* legal for those who otherwise would find it difficult, if not impossible, to afford a lawyer. Such representation is particularly needed where the position being espoused is inherently controversial, or unpopular, or upsetting of the *status quo*.

Beadie Dawson has devoted herself to the *pro bono* principles. Beadie is a Punahou alumna, but for the past year she has served as the *pro bono* lawyer for a fledgling group of alumni, parents, and students of the Kamehameha Schools called *Na Pua A Ke Ali'i Pauahi*. Her initial representation was limited in scope to advocating three requests of Na Pua: support the authority of the president of the Schools; resume "talk story" sessions between alumni and the Bishop Estate trustees who oversee the Schools; and prevent potential retaliation against persons who spoke out. The scope of that representation expanded dramatically when Na Pua captured the attention of Hawai'i's media and the public.

Irrespective of where any person in the community stands in the controversy that has erupted, on fact stands out: Beadie Dawson's *pro bono* spirit and leadership. Despite the expansion of the legal issues she first agreed to advocate, she has persevered. Her work has been a family affair, and her husband Don and adult children Christopher and Donne have had to cover for her at the family business while the demands of her representation have grown to a nearly full-time endeavor. She insists on protecting her family in her decisions, and their continued support demonstrates once again that women can be successful not only as lawyers, but as wives, mothers and friends.



Dorothy "Dolly" Ching

Distinguished Service Award Winner

During this continuing difficult economic period for Hawai'i, visionary business leaders such as Dorothy "Dolly" Ching are more important than ever to Hawai'i. Her accomplishments and long-standing dedication to economic development as well as her community service work are clear indicators of her leadership abilities.

Dolly began her professional life as a school teacher. She worked in labor, government and the legislature before her 1964 appointment as the first woman Assistant Vice President at Bank of Hawai'i, eventually retiring as Executive VP, Director of Governmental Affairs.

Her commitment to the legal community is clearly demonstrated by her former service on the Disciplinary Board of the Supreme Court of Hawai'i; as State Ethics Commissioner; and as Chairperson of the Judicial Selection Commission. She served as a State Senator, Trustee for both the Bernice Pauahi Bishop Museum and the Pali Momi Medical Center. She sits on the Boards of Directors of Friends of the University of Hawai'i School of Law, YWCA, Girl Scouts of America, Big Sisters of Hawai'i, and the Board of Governors of the East-West Center.

She has been named YWCA Businesswoman of the Year and Outstanding Businesswoman of the Year by the Hawai'i Chapter of the National Association of Women Executives. In 1996, she received the Ha'aheo award from the American Board of Trial Advocates for her service to the community at large as well as the legal community. She was one of only two women honored in Hawai'i.

In their nomination letter, Sherry P. Broder and Carol Mon Lee made the following observation: "Dolly has devoted her career to promoting women attorneys, as well as women in other professional occupations and in community service. She is committed to justice and fairness. We are very proud of her. Most importantly, we have enjoyed working with her and appreciate her as an important role model to us."

**HAWAII WOMEN LAWYERS
NEWSLETTER**

This newsletter is published ten times a year by Hawaii Women Lawyers, P.O. Box 2072, Honolulu, Hawaii 96805. Subscriptions are available only to paid-up members.

Letters, articles and other contributions are always welcome. Fax your submissions to Kay Lorraine at (808) 545-8636. We reserve the right to edit for space and content.

President: Susan M. Ichinose
Vice Pres.: Rosemary McShane
Secretary: Susan Lynn Arnett
Treasurer: Eri Kashiwabara
Directors: Hazel Beh
Nancye Bethurem
Calleen Ching
Donna Mae Gray
Na'unanikina'u Kamali'i
Suzanne Terada
Magali V. Sunderland
Editor: Kay Lorraine

Notice To All Non-Members

Last Chance to Continue Receiving the HWL Newsletter

For the past nine months, Hawaii Women Lawyers has been distributing our newsletter as a free service to selected attorneys who are not HWL members. Due to budget constraints, we can no longer continue this practice.

It is our hope that exposure to our newsletter has given readers an insight into our many programs and projects. Our lobbying efforts support legislation protecting the interests of women, children and families in Hawaii. Our programs provide members of the legal community with speakers and workshops on a variety of topics. HWL publications make the law more accessible to all citizens. Our mentor program matches law students with seasoned professionals. Our community outreach effort encompasses areas as far reaching as domestic violence awareness and arts education projects for at-risk youths.

We invite you to join Hawaii Women Lawyers today. Our membership includes both men and women who share a common goal of improving the quality of life for all citizens of Hawaii through equality, fairness and protection under the law.

Please don't let this be your last newsletter. To get a membership application, call the HWL office at 545-8055.

HAWAII WOMEN LAWYERS
P.O. Box 2072
Honolulu, Hawaii 96805

BULK RATE
U.S. POSTAGE
PAID
HONOLULU, HI
PERMIT NO. 172

Nancye L. Bethurem, Esq.
444 Lunalilo Home Road, #904
Honolulu, HI 96825